

# NEWSLETTER

## IMPROVED REBUILT MOLD SHELL

FOR MACHINES  
BRANDED SIDEL\*

### How we discovered the problem

In fall 2020, we had received several mold shells from one of our customers and we noticed that they were pierced due to corrosion. Therefore, our engineering team decided to find a way to fix this.

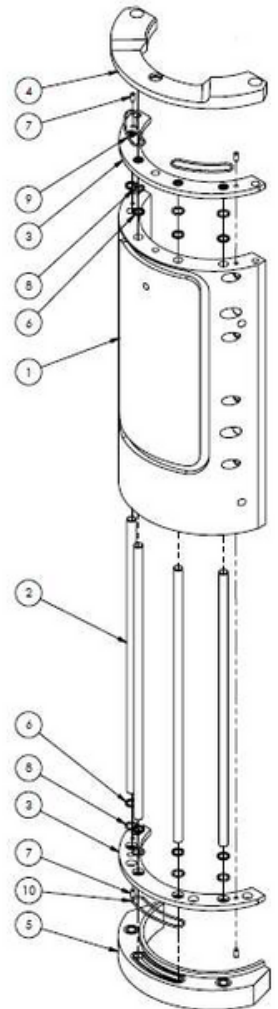


### What we did to fix the problem

➡ The waterways that cool the mold shell create corrosion and pierce them. Therefore, we decided to insert stainless steel tubes in the waterways to avoid water to get in contact with the aluminium mold shell. This change results in a higher durability.

➡ We added hardened steel plates inside the mold shell to extend longevity and reduce the maintenance cost.

➡ Several customers have ordered them and are happy with the results.



## Benefits

- ➔ Better aluminum grade than OEM
- ➔ Maintenance kit available
- ➔ Easy to rebuild in-house
- ➔ Cost saving
- ➔ Stainless steel channel, interchangeable, no corrosion
- ➔ Both sides, compensation and non-compensation available
- ➔ New mold shell also available

